

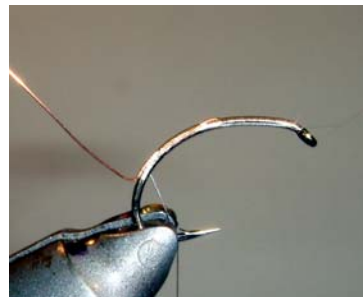
# Pearly Snatcher

Material:

Hook:	Kamasan B100 12 14 or TMC2487 12 14
Thread:	Black 08
Body:	Pearl tinsel Cock black
Ribbing:	Silver wire
Cheeks:	Jungle Cock
Head Hackle (optional)	Hen Black or Seals fur black



1. Tie-in the thread at the eye of the hook
2. Wind it down into the curvature of the hook



3. Tie-in the silver wire



4. Tie-in the tinsel
5. Wind the thread back to the eye of the hook



6. Wind the tinsel in overlapping turns to the eye of the hook
7. Tie-off and cut excess



8. Tie-in the cock feather



9. Wind a palmered body with the cock feather

10. Secure the feather with the silver wire



11. Wind the silverwire as a ribbing through the cock feather to the eye of the hook



12. Tie-in a small jungle cock feather on each side of the hook shank



Optionally you may wind a head hackle with twisted black seals fur or a black hen feather

13. Wind head

14. Whipfinish



15. Secure the head with a drop of black head cement